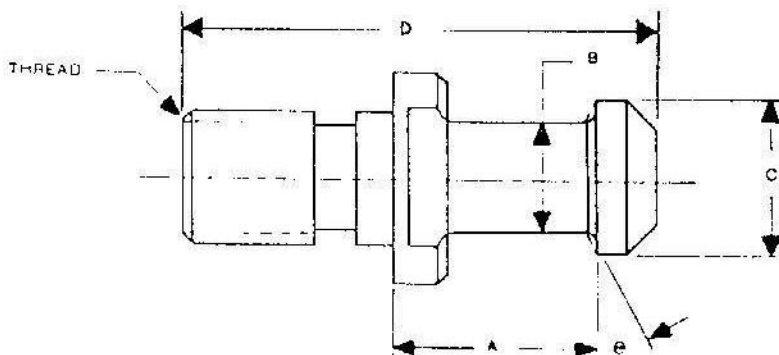


<u>EDP #</u>	<u>MODEL</u>	<u>TAPER</u>	<u>THREAD</u>	<u>ANGLE</u>	<u>A</u>	<u>B</u>	<u>C</u>	<u>D</u>
*15401	PCV40	CV40	5/8"-11	45	.44	.49	.74	1.50
*15402	PCV45	CV45	3/4"-10	45	.58	.61	.94	1.80
*15403	PCV50	CV50	1"-8	45	.70	.82	1.14	2.30

JAPANESE STANDARD RETENTION KNOBS

<u>EDP #</u>	<u>MODEL</u>	<u>TAPER</u>	<u>THREAD</u>	<u>ANGLE</u>	<u>A</u>	<u>B</u>	<u>C</u>	<u>D</u>
*15417	P35-B-BT	BT35	M12-1.75	60	.89	.35	.54	2.09
*15418	P35-C-BT	BT35	M12-1.75	60	.71	.31	.55	1.78
*15420	P35T-2-BT	BT35	M12-1.75	60	.89	.33	.51	1.89
*15422	P40T-1-BT	BT40	M16-2	45	1.10	.39	.59	2.37
*15423	P40T-2-BT	BT40	M16-2	60	1.10	.39	.59	2.37
*15424	POM40-BT	BT40	M16-2	90	1.10	.39	.59	2.37
*15425	P40T-1-CV	CV40	5/8"-11	45	.99	.39	.59	2.25
*15426	P40T-2-CV	CV40	5/8"-11	60	.99	.39	.59	2.25
*15427	POM40-CV	CV40	5/8"-11	90	.99	.39	.59	2.25
*15440	P40-A-CV	CV40	5/8"-11	45	.99	.39	.59	2.13
*15428	P45T-1-BT	BT45	M20-2.5	45	1.22	.55	.75	2.76
*15429	P45T-2-BT	BT45	M20-2.5	60	1.22	.55	.75	2.76
*15470	POM45-BT	BT45	M20-2.5	90	1.22	.55	.75	2.76
*15430	P45T-1-CV	CV45	3/4"-10	45	1.24	.55	.75	2.78
*15431	P45T-2-CV	CV45	3/4"-10	60	1.24	.55	.75	2.78
*15432	POM45-CV	CV45	3/4"-10	90	1.24	.55	.75	2.78
*15433	P50T-1-BT	BT50	M24-3	45	1.38	.67	.91	3.35
*15434	P50T-2-BT	BT50	M24-3	60	1.38	.67	.91	3.35
*15435	POM50-BT	BT50	M24-3	90	1.38	.67	.91	3.35
*15436	P50T-1-CV	CV50	1"-8	45	1.38	.67	.91	3.35
*15437	P50T-2-CV	CV50	1"-8	60	1.38	.67	.91	3.35
*15438	POM50-CV	CV50	1"-8	90	1.38	.67	.91	3.35



WARNING

WARNING

WARNING

Since there are many different style retention knobs which are not necessarily interchangeable, extreme care must be taken when selecting a retention knob for a particular machine. Failure to use the proper retention knob is dangerous and can result in inadequate coupling of the adapter to the spindle during machining. When ordering retention knobs, please always specify machine make and model. Special non-standard retention knobs will be quoted on request.

EDP #	MODEL	ORIG. PRICE	SALE PRICE
DUST COVERS			
(NBP)			
18711	DP 6-2.0	\$ 17.00	\$ 10.00
18712	DP 6-3.5	17.00	10.00
18721	DP 8-2.0	17.00	10.00
18723	DP 8-5.0	17.00	10.00
18725	DP 8-8.0	17.00	10.00
18731	DP10-2.5	19.00	11.00
18734	DP10-7.0	19.00	11.00
18735	DP10-8.5	19.00	11.00
18736	DP10-10.0	19.00	11.00
18741	DP13-4.0	19.00	11.00
18742	DP13-5.5	19.00	11.00
18743	DP13-7.0	19.00	11.00
18746	DP13-11.5	19.00	11.00
18751	DP16-4.0	25.00	15.00
18752	DP16-5.5	25.00	15.00
18753	DP16-7.0	25.00	15.00
18754	DP16-8.5	25.00	15.00
18756	DP16-11.5	25.00	15.00
18758	DP16-14.5	25.00	15.00
18761	DP20-3.5	25.00	15.00
18762	DP20-5.0	25.00	15.00
18764	DP20-8.0	25.00	15.00
18765	DP20-9.5	25.00	15.00
18767	DP20-12.5	25.00	15.00
18769	DP20-15.5	25.00	15.00

NOTE: PRICES FOR DUST COVERS ARE FOR SETS OF (5) PCS.

TAP COLLETS, TYPE "TCS"			
(TCS)			
17050	TCS12-No.6	\$ 60.00	\$ 36.00
17051	TCS12-No.8	60.00	36.00
17052	TCS12-No.10	60.00	36.00
17053	TCS12-No.12	60.00	36.00
17054	TCS12-U 1/4	60.00	36.00
17057	TCS12-U 1/2	60.00	36.00
17058	TCS12-P 1/8	60.00	36.00

EDP #	MODEL	ORIG. PRICE	SALE PRICE
TAP COLLETS, TYPE "TZ"			
(TZC)			
14619	TZ12-No. 6	\$ 86.00	\$ 52.00
14622	TZ12-No. 12	86.00	52.00
14630	TZ24-U 7/16	118.00	71.00
14632	TZ24-U 9/16	118.00	71.00
14635	TZ24-U 7/8	118.00	71.00
99981	TZ24-M18D (DIN)	118.00	71.00
99981	TZ24-M24 (JIS)	118.00	71.00
14643	TZ36-U1-1/4	280.00	168.00

TAP COLLETS, TYPE "BZ"			
(BZC)			
11305	BZ12-U 5/16	\$ 36.00	\$ 22.00
11306	BZ12-U 3/8	36.00	22.00
11315	BZ20-U 3/8	50.00	30.00
11322	BZ20-P 1/8	50.00	30.00
11323	BZ20-P 1/4	50.00	30.00
99981	BZ20-P 1/8 A	50.00	30.00

RETENTION KNOBS			
(RTK)			
15401	PCV40	\$ 15.00	\$ 9.00
15403	PCV50	17.00	10.00
15404	PCV40M	18.00	11.00
15406	PCV50M	26.00	16.00
15417	P35-B-BT	26.00	16.00
15418	P35-C-BT	26.00	16.00
15420	P35T-2-BT	20.00	12.00
15422	P40T-1-BT	20.00	12.00
15423	P40T-2-BT	20.00	12.00
15425	P40T-1-CV	20.00	12.00
15440	P40-A-CV	22.00	13.00
15428	P45T-1-BT	23.00	14.00
15429	P45T-2-BT	23.00	14.00
15430	P45T-1-CV	23.00	14.00
15431	P45T-2-CV	23.00	14.00
15432	POM45-CV	23.00	14.00
15433	P50T-1-BT	24.00	14.00
15435	POM50-BT	24.00	14.00
15436	P50T-1-CV	24.00	14.00
15438	POM50-CV	24.00	14.00